



New Twin Shaft Compulsory Mixer **MBT series** - Dry & Wet concrete production -

EXISTING PLANTS

This patented new type twin shaft compulsory mixer is the answer to the always more required transformation of existing concrete dry plants in wet ones by adding a mixer in order to get as the dry as the wet discharge into truckmixers.

This transformation has been made in the previous plant technology by an extension of aggregates belt conveyor and cement screw conveyor and adding an external by-pass device to get the direct load into the truckmixer.

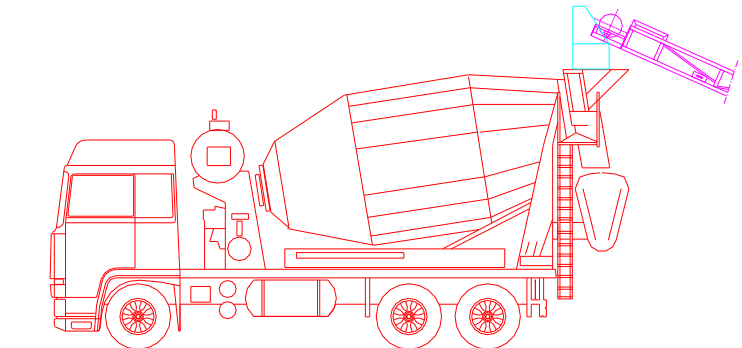
With MBT type mixer these extensions are not more necessary and also the aggregates by-pass isn't more necessary.

A further advantage with MBT type mixer is the reduction of the falling heightness of aggregates by belt conveyor to the truckmixer, getting so a relevant reduction of wearing action inside the mixing drum inlet.

In case of not enough length of existing aggregate belt conveyor and cement screw conveyor there's the possibility to place the mixer's supporting trestle baseplates at some cm under the 0 ground level.

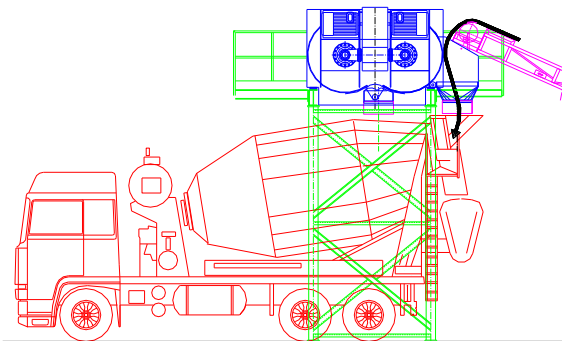
Finally by this solution ready mix companies can get with the most cheap transformation the possibility to maintain high dry production and a considerable wet production.

EXISTING DRY PLANT BEFORE THE APPLICATION

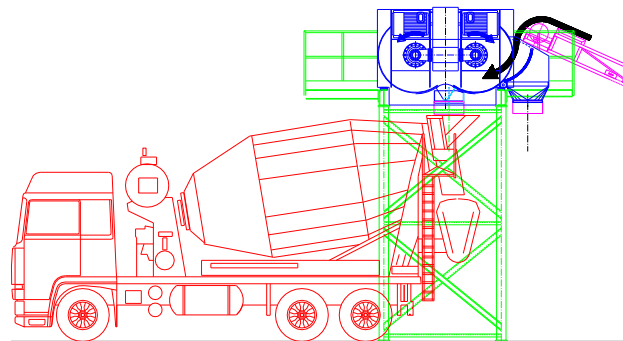


MBT ACCORDING TO APPLICATION A

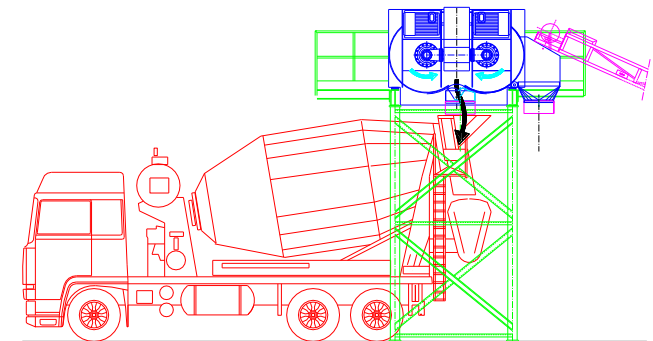
DRY LOAD INTO TRUCKMIXER



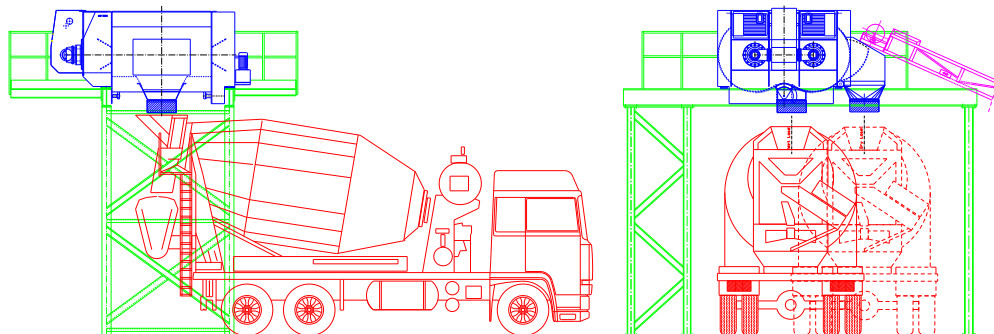
MIXER LOADING



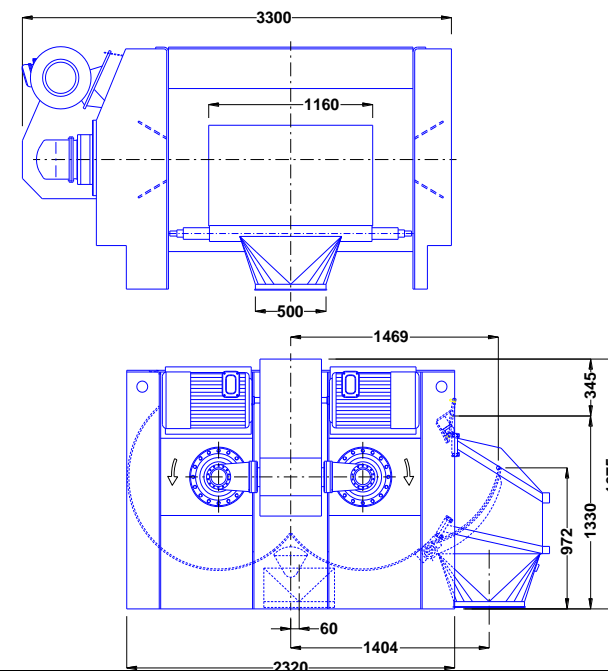
WET LOAD INTO TRUCKMIXER



MBT ACCORDING TO APPLICATION B



MBT3000 TECHNICAL DATA



NEW PLANTS

To get general smaller size on new dry-wet plants with MBT mixer we have lowered the aggregates and cement loading points to keep more short the length of both belt conveyor and cement screw conveyor and, also in this case, it is no more necessary the aggregates by-pass device as this function is already covered by the special dry charging-discharging door.

By this solution ready mix companies can get with the most cheap execution the possibility of high dry production together with a considerable wet production.

A further advantage with MBT type mixer is the reduction of falling heightness of aggregates by belt conveyor to the truckmixer, getting so a relevant reduction of wearing action inside the mixing drum inlet.

Also for new plants are always suitable both application A and application B.

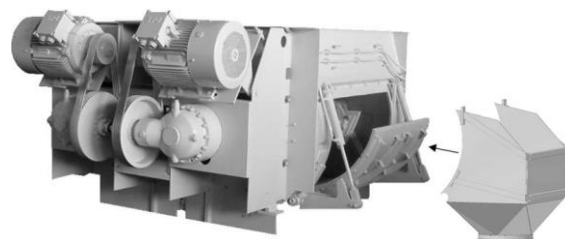
Both Mixer and Trestle are **containerizable** without extra heightness.

STANDARD EXECUTION

Bolted arms on long shafts
Wear internal lining **Hardox500 12mm**
Mixing Paddles **Hardox500 20mm**
Hydraulic drive unit **P=3kW**
Automatic greasing plant
Shaft cleaning rings

OPTIONAL EQUIPMENTS

Wear internal lining **Hardox500 15mm**
Mixing Paddles **Hardox500 30mm**
Automatic washing plant



DRY FILLING	lt	3.000
FRESH CONCR./BATCH	lt	2.500
VIBRATED CONCR./BATCH	lt	2.000
MIXING POWER	Kw	2x37
HYDRAULIC POWER	Kw	1x3,0
MIXING SHOVELS	n.	2x6
DISCHARGING DOOR	n.	1
BY-PASSING DOOR	n.	1
FINAL MIXING TIME	sec.	30
DISCHARGING TIME	sec.	20
WEIGHT	daN	6.500

Drawings, technical data and dimensions subject to change without notice



Piani di Marischio – C.P. 110
Tel +39(0732)71104 - 226217
Fax +39(0732)71082
60044 FABRIANO (AN) ITALIA
e-mail: info@cm-concretemixers.it
web : www.cm-concretemixers.it